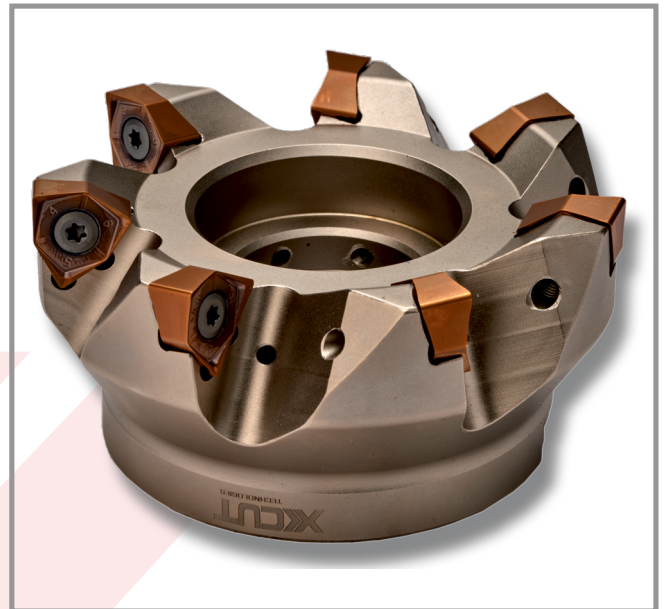
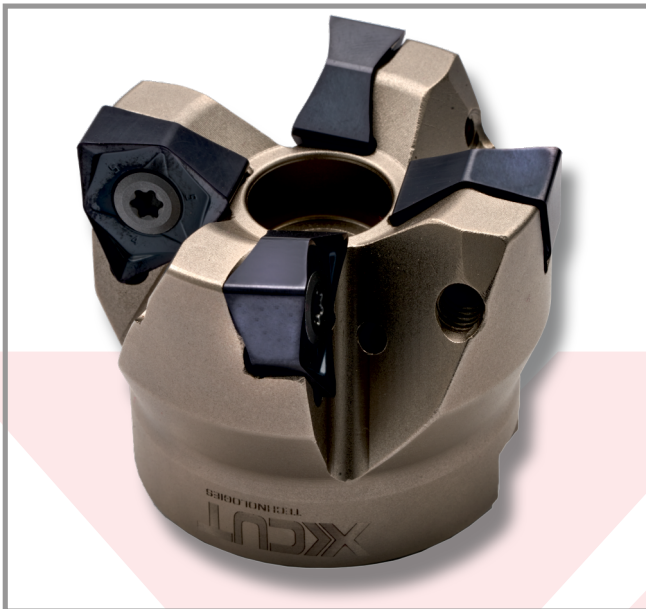
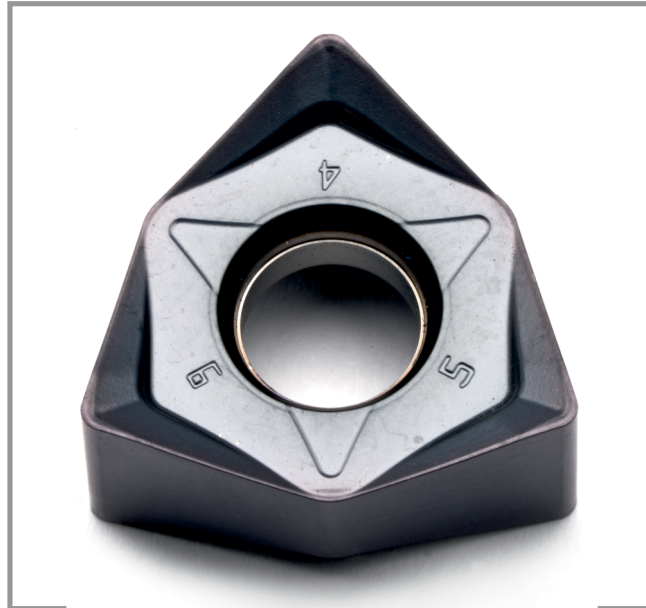


WNMX



WNMX OVERVIEW

Application

1. Face milling



2. Angled milling



3. Shoulder milling



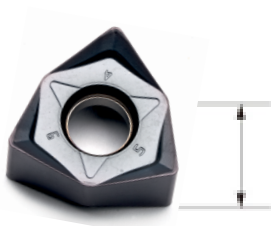
4. Pocket milling



Customer benefits

- High precision 90° milling
- 6 cutting edges achieve better machining economy.
- Insert has wide area application which is suitable for machining cast iron, steel, stainless steel and difficult to machine materials.
- Excellent matching of new PRE body and insert is close to perfect 90°
- A variety of machining areas is feasible including surface, step, groove and vertical milling.
- The design of large front angle and dynamic slope provides low resistance and vibration during machining, The roughness of workplace surface is also improved.

6 effective cutting edges



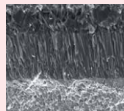
XT125 ■■■



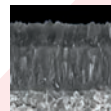
XT820 ■■■



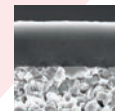
XT430 ■■■



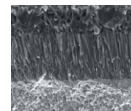
XT840 ■



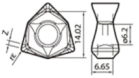
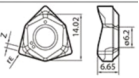
XT930 ■




XK3121 ■




WNMX OVERVIEW

Insert	Designation	Chipbreaker	Grade	Available
	WNGX080608	HP	XT840	•
	WNGX080608	SM	XT930	•
	WNMX080608	GM	XT125	•
	WNMX080608	GM	XK3121	•
	WNMX080608	GM	XT820	•
	WNMX080608	GM	XT430	•

HP - HIGH PERFORMANCE • SM - HARD MATERIALS • GM - GENERAL PURPOSE

Body	Specification	Teeth	D	D ₁	d	H	S	Available
	XTSM-D50-A22-4T-PRE	4	50	15	22	40	8	•
	XTSM-D63-A22-4T-PRE	4	63	18	22	40	8	•
	XTSM-D63-A22-5T-PRE	5	63	18	22	40	8	•
	XTSM-D80-A27-5T-PRE	5	80	20	27	50	8	•
	XTSM-D80-A27-7T-PRE	7	80	20	27	50	8	•
	XTSM-D100-A32-7T-PRE	7	100	45	32	50	8	•
	XTSM-D100-A32-9T-PRE	9	100	45	32	50	8	•
	XTSM-D125-A40-8T-PRE	8	125	55	40	63	8	•
	XTSM-D160-A40-10T-PRE	10	160	56	40	63	8	•
	XTSM-D200-A60-12T-PRE	12	200	133.5	60	63	8	•
	XTSM-D250-A60-14T-PRE	14	250	133.5	60	63	8	•

Spare parts	Designation	Torque moment (Nm)	Available
	Screw M5.0 x 12 - T20	5	•

WNNMX CUTTING DATA

Material	Chipbreaker	Grade	Vc	Fz	Ap
P	GM	XT125	80-200	0.1-0.3	0.5-6.0
	GM	XT430	100-240	0.1-0.3	0.5-6.0
	GM	XT820	80-240	0.1-0.3	0.5-6.0
	HP	XT840	100-250	0.1-0.3	0.5-6.0
M	GM	XT125	80-180	0.08-0.25	0.5-6.0
	GM	XT430	100-200	0.08-0.3	0.5-6.0
	SM	XT930	100-200	0.08-0.3	0.5-6.0
K	GM	XT430	120-250	0.1-0.3	0.5-6.0
	HP	XT840	120-250	0.1-0.3	0.5-6.0
	GM	XK3121	120-300	0.1-0.35	0.5-6.0
H	GM	XT125	30-80	0.06-0.2	0.5-6.0
	SM	XT930	40-120	0.06-0.2	0.5-6.0

AUTHORISED DEALER